

Appendix

An introduction of installing the USB driver in the PLC

Contents

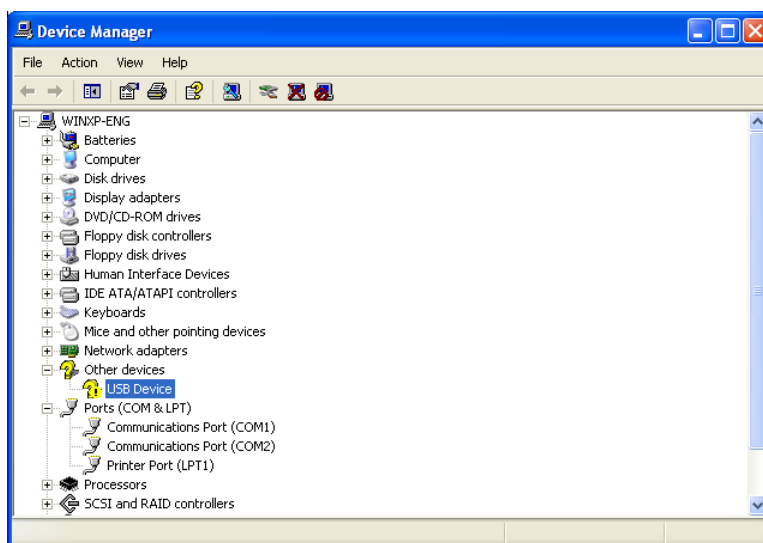
A.1	Installing the USB Driver	A-2
-----	---------------------------------	-----

A.1 Installing the USB Driver

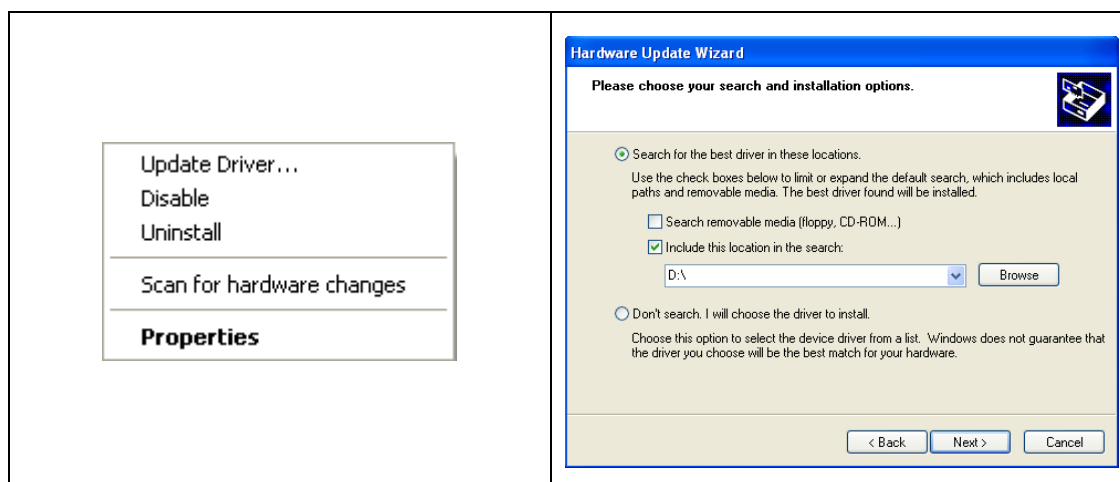
This section introduces the installation of the DELTA PLC USB driver in the computer. After the driver is installed, the USB interface can be used as the serial port (RS-232). Please use the standard USB cable. The length of the cable should be within five meters.

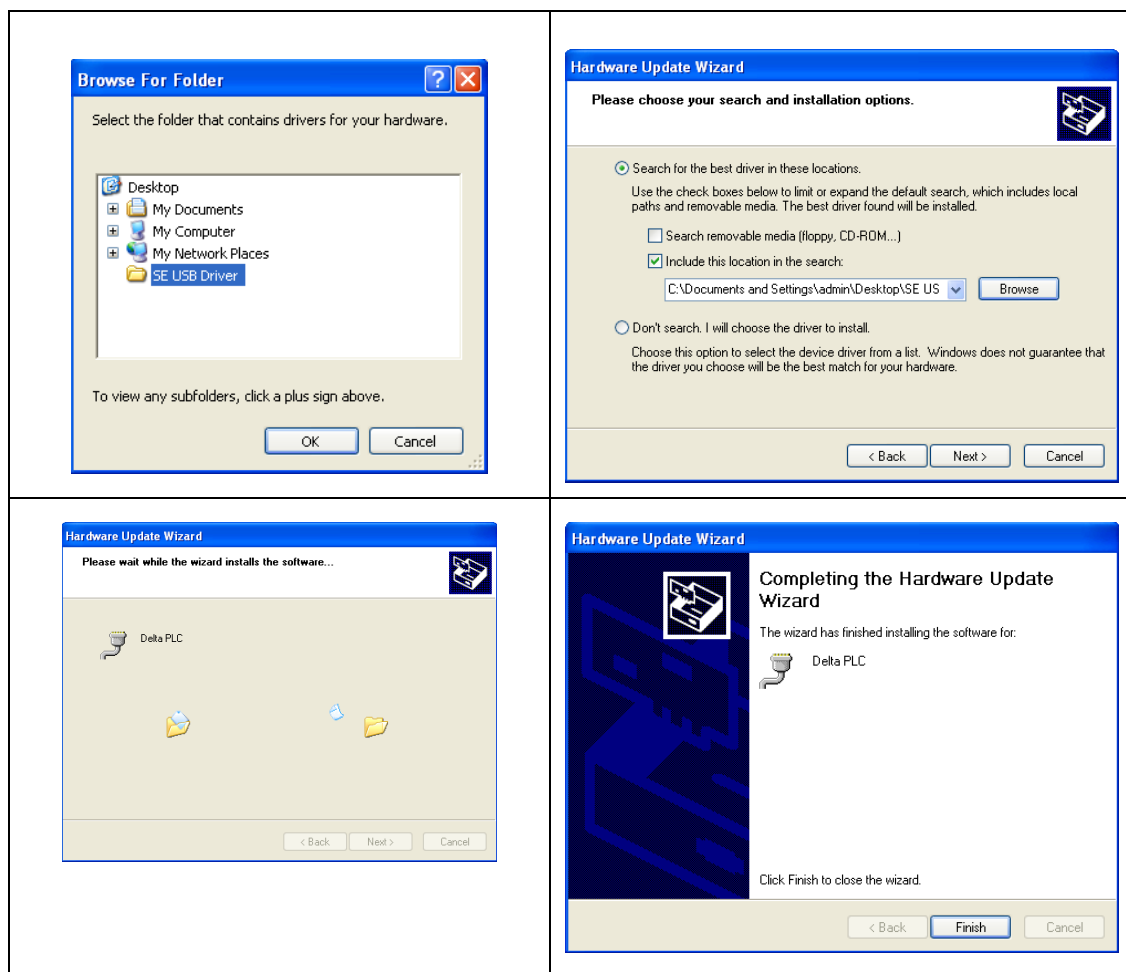
Installing the driver

The personal computer and the PLC are connected through the USB and the mini USB cable. After they are connected, users can find **USB Device** in the **Device Manager** window.

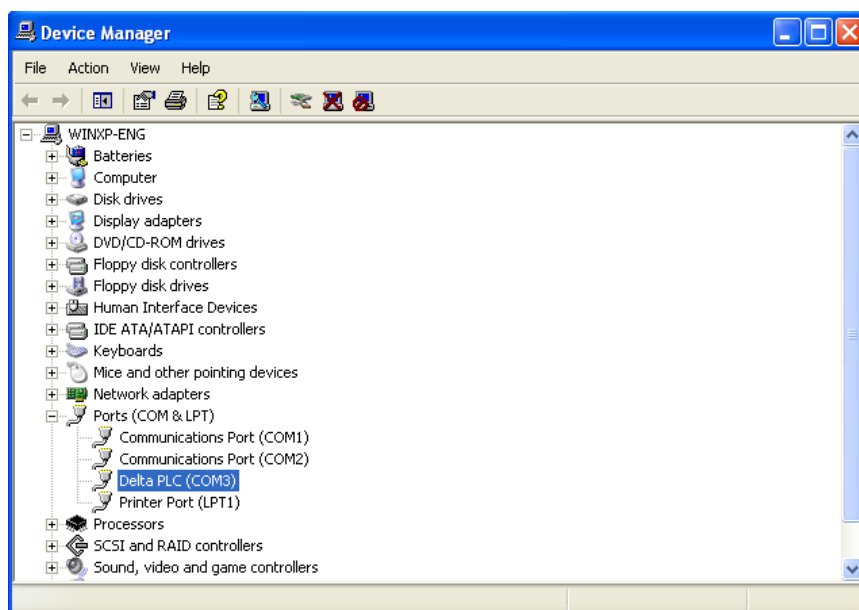


Click the right mouse button, and select **Update Driver...** to open the **Hardware Update Wizard** window. Click **Browse** to specify the folder, and then click **Next** to start the installation of the driver.



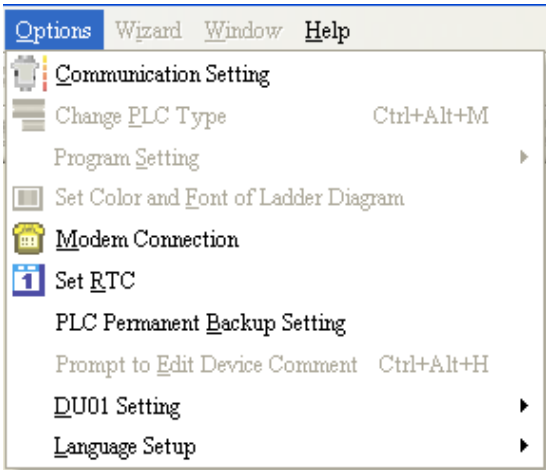
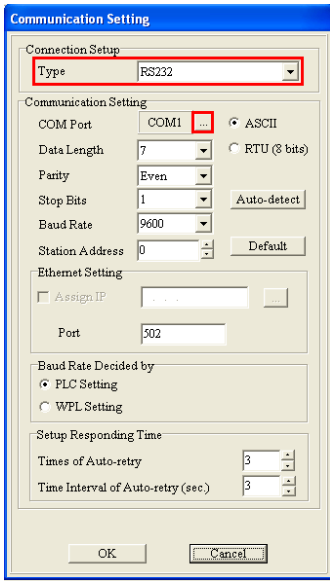
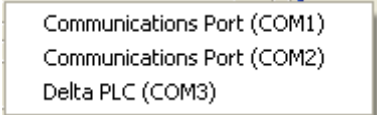
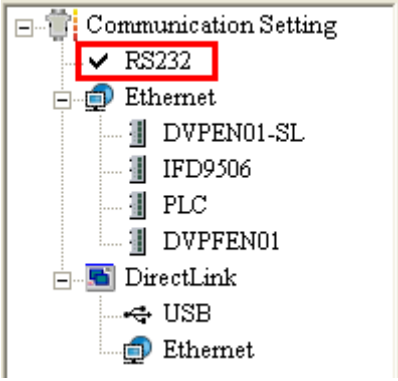


After the driver is installed, users can find the **Delta PLC** device and the communication port assigned to it in the **Device Manger** window. The usage of this device is the same as that of RS-232.



Select **Communication Setting** in **Options** to open the **Communication Setting** window. Select **RS232** in the **Connection Setup** box, select the communication port assigned by the USB in the **Communication Setting** box, and click **OK**. After the communication setting is complete, users can find that **RS232** in the communication work area is checked. They can download the program to the PLC and upload the program from the PLC through the USB, and can use the online mode.

A

 <p>The 'Options' menu is open, showing various settings. 'Communication Setting' is highlighted at the top. Other options include 'Change PLC Type', 'Program Setting', 'Set Color and Font of Ladder Diagram', 'Modem Connection', 'Set RTC', 'PLC Permanent Backup Setting', 'Prompt to Edit Device Comment', 'DU01 Setting', and 'Language Setup'.</p>	 <p>The 'Communication Setting' dialog box is shown. In the 'Connection Setup' section, 'Type' is set to 'RS232'. In the 'Communication Setting' section, 'COM Port' is set to 'COM1'. Other settings include 'Data Length' (7), 'Parity' (Even), 'Stop Bits' (1), 'Baud Rate' (9600), and 'Station Address' (0). The 'Ethernet Setting' section has 'Assign IP' checked and 'Port' set to 502. The 'Baud Rate Decided by' section has 'PLC Setting' selected. The 'Setup Responding Time' section has 'Times of Auto-retry' and 'Time Interval of Auto-retry (sec)' both set to 3.</p>
 <p>A list of communication ports is displayed: 'Communications Port (COM1)', 'Communications Port (COM2)', and 'Delta PLC (COM3)'.</p>	 <p>The 'Communication Setting' window is shown with a tree view. 'RS232' is checked and highlighted with a red box. Other options in the tree include 'Ethernet', 'DirectLink', 'USB', and another 'Ethernet' entry. Under 'Ethernet', there are sub-items: 'DVPEN01-SL', 'IFD9506', 'PLC', and 'DVPFEN01'.</p>